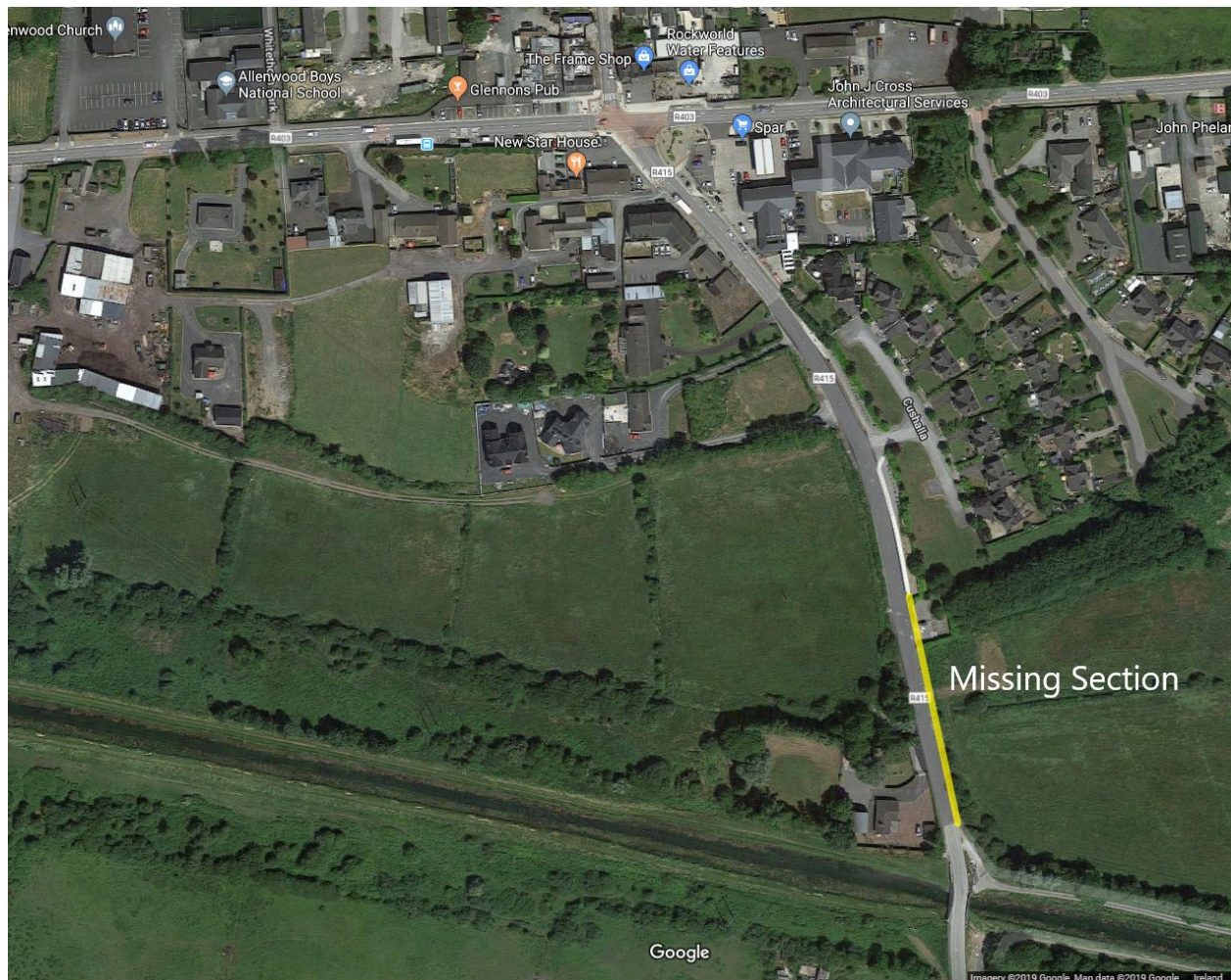


---

## Linking Allenwood Cross to the Greenway

For many years now, Allenwood Tidy Towns and several individual members of the community have requested the completion of the footpath from the end of Cushalla estate on the Newbridge Road (R415) to Bond (Derrymullen) Bridge.

Our requests have been consistently refused, for a variety of reasons, but mainly due to lack of funding. This section of pathway, marked in the map shown below, must now be put in place to safely link the Greenway with Allenwood village, and should be included in the project costings for the Greenway.



The missing section of footpath is less than 150 metres long and there are several reasons why it is essential that it is built, as outlined below.

---

## Justification for Completion of Footpath to Bond Bridge

### Traffic Safety

Even with the present usage of the Grand Canal by locals and tourists alike, there is heavy pedestrian traffic from Allenwood Cross to the canal by the R415. It is not unusual to see walkers and runners on the road just before the bridge, sometimes with dogs, and even on dark winter evenings. The author has regularly seen people trying to reach the canal bank with streams of motor traffic, including many heavy haulage vehicles, coming over the bridge unaware that they are there. It should also be noted that the area is unlit.

### Circular Walking Route

In 2018, Allenwood Tidy Towns identified a project to work with Kildare County Council and housing developers in the area to establish a circular walking route around the village. This section of roadway is part of that walking route and providing the missing section of footpath will also serve to complete the section of the route from Allenwood Cross to Derrymullen Bridge. The Greenway itself will now form part of the second stretch of the route. (See Appendix A).

### Accessibility for Buggies, Wheelchairs & Mobility Scooters

It will be incredibly difficult, if not impossible, for the buggy, wheelchair and mobility scooter users of Allenwood to reach the Greenway without this pathway being made available. It would be unacceptable that certain groups are excluded from using the Greenway due to our village lacking the final 150 metres of infrastructure that is necessary.

### Access to village services from Greenway

Whilst we believe that the three reasons given above in themselves justify the pathway, it is now imperative that in order to safely allow Greenway users to reach the services of Allenwood village, that a safe footpath is put in place. The village offers food, drink and toilet facilities. Such services are in short supply along the Greenway.

It should be noted that planning permission has been granted for a pub and cafe on the western side of the R415 opposite Cushalla and that the existing pub and shops are often used by walkers and cyclists as it stands.