



Irish Water | Uisce Éireann



# Upper Liffey Valley Sewerage Scheme

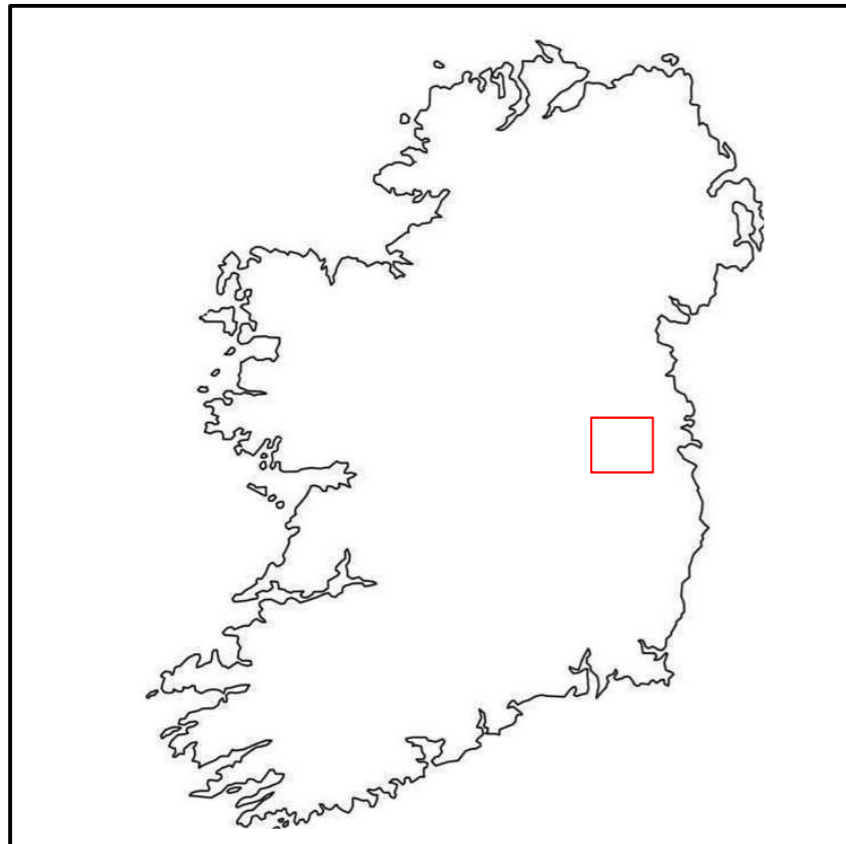
## J1145 - Clane Town Centre Sewer Phase 3 Traffic Management Layout

### Drawing No.

ULVSS\_TM\_001  
ULVSS\_TM\_002  
ULVSS\_TM\_003

### Drawing Title

Works Location  
Phase 3 TM Layout  
Phase 3 Local Diversion Route TM Layout



- 55m of DN450 & DN375 Concrete Pipe  
 - 2.2m Deep Excavation  
 - 5 Days - (06/04/2020-10/04/2020)

**DESIGN PARAMETERS**

**ROAD / WORKS CHARACTERISTICS**

Road Level	Roadworks Type	Speed Limit
2	A	50 60

**TEMPORARY SIGNS**

Sign Visibility	Number of Signs	Sign Spacing
50m	3	25m

**MIN. RATE OF TAPER**

Taper at Lane	Taper At Hard Shoulder	Transition Length
N/A	N/A	N/A

**SAFETY ZONES & LANE WIDTH**

Longitudinal Safety Zone	Lateral Safety Zone	Minimum Lane Width
N/A	N/A	N/A

**CONE SIZE & SPACING**

Minimum Cone Height	Spacing at Tapers	Longitudinal Spacing
750mm	3m	6m

**LAMP SPACING**

Lamp Spacing at Tapers	Longitudinal Lamp Spacing
6m	12m

**LEGEND**

PIPELINE ROUTE

**PROJECT INFORMATION**

Client: Irish Water | Uisce Éireann

Project: J1145 - Upper Liffey Valley Sewerage Scheme Upgrade Works.

Title: Phase 3 - Works Location  
 Dwg No: ULVSS\_TM\_001  
 Date: 10/01/2020 Rev: 00 Scale: N.T.S.  
 Drawn: C.O Donnell Checked: TBC Approved: TBC

Atheny, Co. Galway.  
 Tel: 00353 (91) 844356  
 Fax: 00353 (91) 844519  
 www.coffeygroup.com

**GENERAL NOTES:**

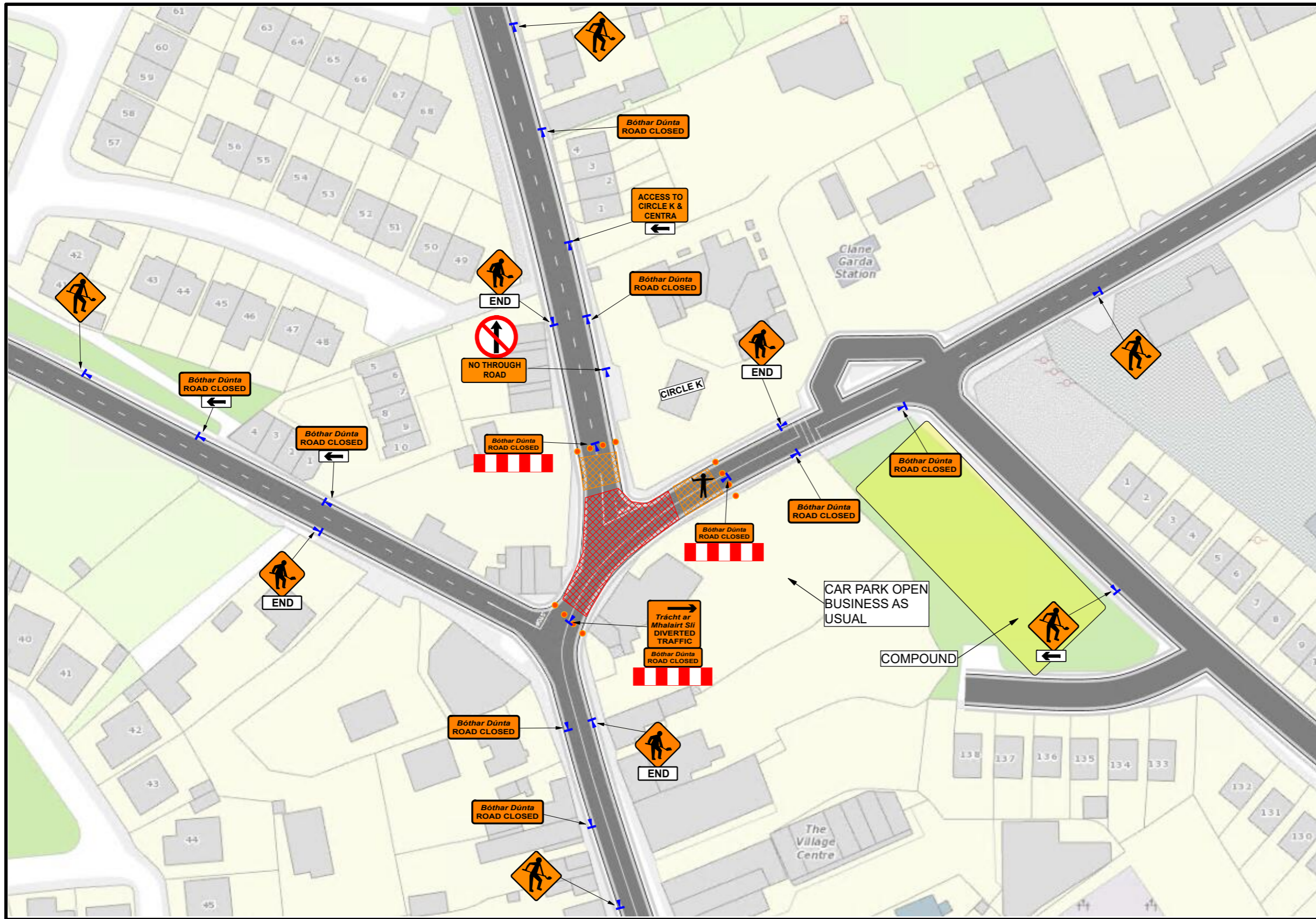
- All works to be carried out in accordance with the latest revisions of Chapter 8 of the Traffic Signs Manual and the LGMSB document 'Guidance for the Control and Management of Traffic at Road Works'.
- The Temporary traffic management plan may only be implemented by a qualified Temporary Traffic Operations Supervisor (TTOS). The TTOS is to be in possession of the relevant CSCS signing lighting and guarding at road works card.
- TTOS shall be available at all times when traffic management is in operation. Designated personnel to hold Health and Safety at Road Works CSCS card if applicable.
- Inspections of the traffic management layout are to be carried out on a daily basis to ensure the TM equipment has been set out as specified in the temporary traffic management plan (TTMP) and to ensure the TTMP is operating effectively.
- Maintenance of the traffic management equipment to be carried out on an on-going basis throughout the works.
- Signage to conform to BS EN 12899-1 (BS 8404). Sign faces are to be of retro-reflective material and the retro-reflectivity, colours, chromaticity and luminance factors shall be as specified in the TS4 Regulations (April 2001).
- Designated works access locations are to be clearly signposted using signs WK 052 / WK 053 as required. Exact location of access signage to be determined by the TTOS on site, referring to Chapter 8 of the Traffic Signs Manual for usage.



- The layouts and diagrams shown in chapter 8 of the traffic signs manual are based on directing traffic through roadworks using delineators and safety zones rather than on the use of restraint systems. Safety barriers should only be used where the benefits outweigh the risks involved in their installation and use. Risk assessment to be undertaken by the relevant supervisor in relation to excavations in the vicinity of the existing roadway.
- It is envisaged that unobstructed access shall be maintained for the emergency services for the duration of the works. Should access be required to the site / works areas then this shall be via agreed site access points.
- Access to local residence and business properties to be maintained at all times and to be coordinated by the TTOS on site.
- Quantity, type and location of signage is shown on each specific layout drawing. Diamond warning signage to be 600mm length. Circular regulatory signage to be 600mm diameter.
- Pedestrian routes to be maintained during the works. Pedestrian routes to be coordinated by the TTOS on site and signed accordingly.

**DRAWING HISTORY:**

Rev.	Date	Comment
00	10/01/2020	Construction Stage



**DESIGN PARAMETERS**

ROAD / WORKS CHARACTERISTICS		
Road Level	Roadworks Type	Speed Limit
2	A	50 60
TEMPORARY SIGNS		
Sign Visibility	Number of Signs	Sign Spacing
50m	3	25m
MIN. RATE OF TAPER		
Taper at Lane	Taper At Hard Shoulder	Transition Length
N/A	N/A	N/A
SAFETY ZONES & LANE WIDTH		
Longitudinal Safety Zone	Lateral Safety Zone	Minimum Lane Width
N/A	N/A	N/A
CONE SIZE & SPACING		
Minimum Cone Height	Spacing at Tapers	Longitudinal Spacing
750mm	3m	6m
LAMP SPACING		
Lamp Spacing at Tapers	Longitudinal Lamp Spacing	
6m	12m	

**LEGEND**

- Sign Location
- Road Cones
- Works Area - Excavation Area
- Traffic Marshal
- Works Area - Store & Operate Plant
- Traffic Flow
- Traffic Barrier

**PROJECT INFORMATION**

Client: Irish Water | Uisce Éireann

Project: J1145 - Upper Liffey Valley Sewerage Scheme Upgrade Works.

Title: Phase 3 TM Layout

Dwg No: ULVSS\_TM\_002

Date: 10/01/2020 Rev: 00 Scale: N.T.S.

Drawn: C. O'Donnell Checked: TBC Approved: TBC

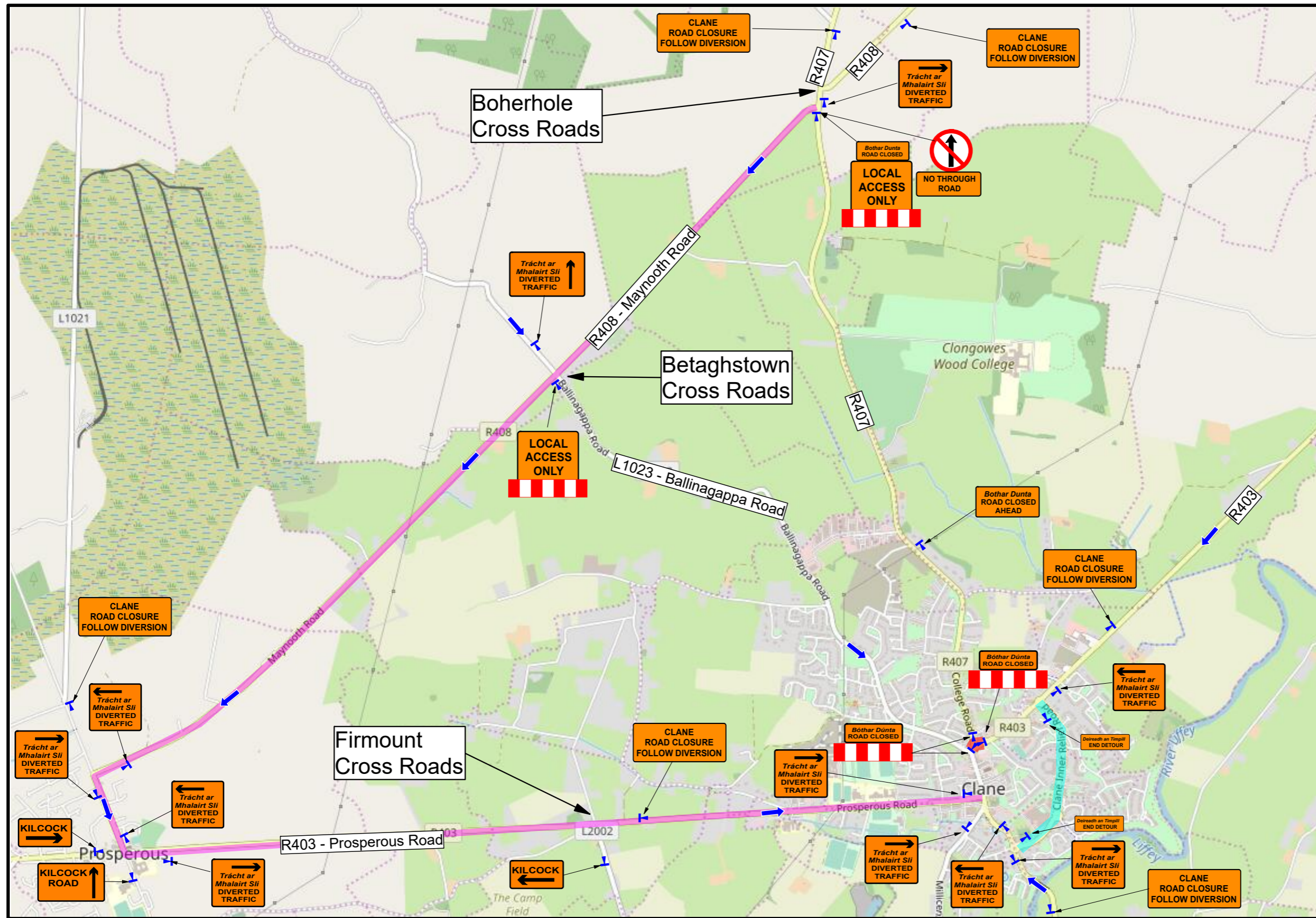
Athlery, Co. Galway. Tel: 00353 (91) 844356 Fax: 00353 (91) 844519 www.coffeygroup.com

- GENERAL NOTES:**
- All works to be carried out in accordance with the latest revisions of Chapter 8 of the Traffic Signs Manual and the LGMSB document 'Guidance for the Control and Management of Traffic at Road Works'.
  - The Temporary traffic management plan may only be implemented by a qualified Temporary Traffic Operations Supervisor (TTOS). The TTOS is to be in possession of the relevant CSCS signing lighting and guarding at road works card.
  - TTOS shall be available at all times when traffic management is in operation. Designated personnel to hold Health and Safety at Road Works CSCS card if applicable.
  - Inspections of the traffic management layout are to be carried out on a daily basis to ensure the TM equipment has been set out as specified in the temporary traffic management plan (TTMP) and to ensure the TTMP is operating effectively.
  - Signage to conform to BS EN 12899-1 (BS 8404). Sign faces are to be of retro-reflective material and the retro-reflectivity, colours, chromaticity and luminance factors shall be as specified in the TS4 Regulations (April 2001).
  - Designated works access locations are to be clearly signposted using signs WK 052 / WK 053 as required. Exact location of access signage to be determined by the TTOS on site, referring to Chapter 8 of the Traffic Signs Manual for usage.
  - The layouts and diagrams shown in chapter 8 of the traffic signs manual are based on directing traffic through roadworks using delineators and safety zones rather than on the use of restraint systems. Safety barriers should only be used where the benefits outweigh the risks involved in their installation and use. Risk assessment to be undertaken by the relevant supervisor in relation to excavations in the vicinity of the existing roadway.
  - It is envisaged that unobstructed access shall be maintained for the emergency services for the duration of the works. Should access be required to the site / works areas then this shall be via agreed site access points.
  - Access to local residence and business properties to be maintained at all times and to be coordinated by the TTOS on site.
  - Quantity, type and location of signage is shown on each specific layout drawing. Diamond warning signage to be 600mm length. Circular regulatory signage to be 600mm diameter.
  - Pedestrian routes to be maintained during the works. Pedestrian routes to be coordinated by the TTOS on site and signed accordingly.

**DRAWING HISTORY:**

Rev.	Date	Comment
00	10/01/2020	Construction Stage





### DESIGN PARAMETERS

#### ROAD / WORKS CHARACTERISTICS

Road Level	Roadworks Type	Speed Limit
2	A	50 60

#### TEMPORARY SIGNS

Sign Visibility	Number of Signs	Sign Spacing
50m	3	25m

#### MIN. RATE OF TAPER

Taper at Lane	Taper At Hard Shoulder	Transition Length
N/A	N/A	N/A

#### SAFETY ZONES & LANE WIDTH

Longitudinal Safety Zone	Lateral Safety Zone	Minimum Lane Width
N/A	N/A	N/A

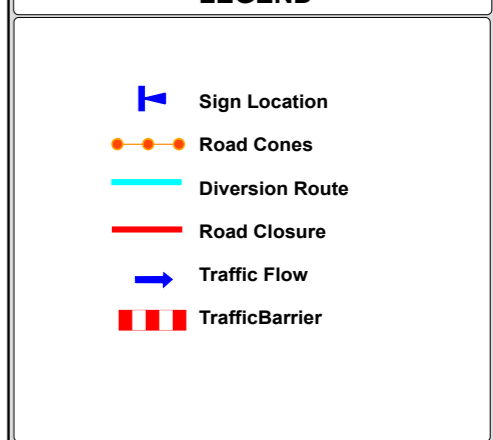
#### CONE SIZE & SPACING

Minimum Cone Height	Spacing at Tapers	Longitudinal Spacing
750mm	3m	6m

#### LAMP SPACING

Lamp Spacing at Tapers	Longitudinal Lamp Spacing
6m	12m

### LEGEND



### PROJECT INFORMATION

Client: Irish Water | Uisce Éireann

Project: J1145 - Upper Liffey Valley Sewerage Scheme Upgrade Works.

Title: Phase 3 Local Diversion Route TM Layout

Dwg No: ULVSS\_TM\_003

Date: 10/01/2020 Rev: 00 Scale: N.T.S.

Drawn: C. O'Donnell Checked: TBC Approved: TBC

Athenry, Co. Galway. Tel: 00353 (91) 844356 Fax: 00353 (91) 844519 [www.coffeygroup.com](http://www.coffeygroup.com)

### GENERAL NOTES:

- All works to be carried out in accordance with the latest revisions of Chapter 8 of the Traffic Signs Manual and the LGMSB document 'Guidance for the Control and Management of Traffic at Road Works'.
- The Temporary traffic management plan may only be implemented by a qualified Temporary Traffic Operations Supervisor (TTOS). The TTOS is to be in possession of the relevant CSCS signing lighting and guarding at road works card.
- TTOS shall be available at all times when traffic management is in operation. Designated personnel to hold Health and Safety at Road Works CSCS card if applicable.
- Inspections of the traffic management layout are to be carried out on a daily basis to ensure the TM equipment has been set out as specified in the temporary traffic management plan (TTMP) and to ensure that TTMP is operating effectively.
- Maintenance of the traffic management equipment to be carried out on an on-going basis throughout the works.
- Signage to conform to BS EN 12899-1 (BS 8404). Sign faces are to be of retro-reflective material and the retro-reflectivity, colours, chromaticity and luminance factors shall be as specified in the TS4 Regulations (April 2001).
- Designated works access locations are to be clearly signposted using signs WK 052 / WK 053 as required. Exact location of access signage to be determined by the TTOS on site, referring to Chapter 8 of the Traffic Signs Manual for usage.
- The layouts and diagrams shown in chapter 8 of the traffic signs manual are based on directing traffic through roadworks using delineators and safety zones rather than on the use of restraint systems. Safety barriers should only be used where the benefits outweigh the risks involved in their installation and use. Risk assessment to be undertaken by the relevant supervisor in relation to excavations in the vicinity of the existing roadway.
- It is envisaged that unobstructed access shall be maintained for the emergency services for the duration of the works. Should access be required to the site / works areas then this shall be via agreed site access points.
- Access to local residence and business properties to be maintained at all times and to be coordinated by the TTOS on site.
- Quantity, type and location of signage is shown on each specific layout drawing. Diamond warning signage to be 600mm length. Circular regulatory signage to be 600mm diameter.
- Pedestrian routes to be maintained during the works. Pedestrian routes to be coordinated by the TTOS on site and signed accordingly.



### DRAWING HISTORY:

Rev.	Date	Comment
00	10/01/2020	Construction Stage