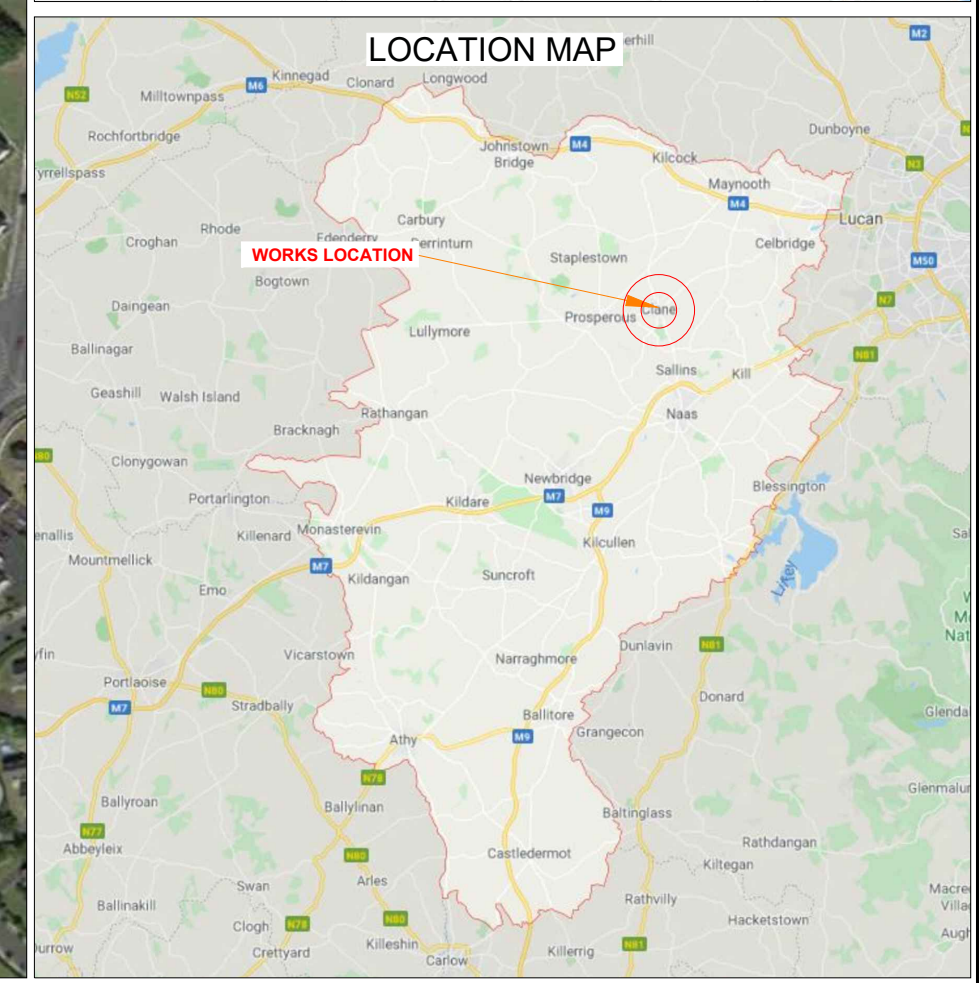
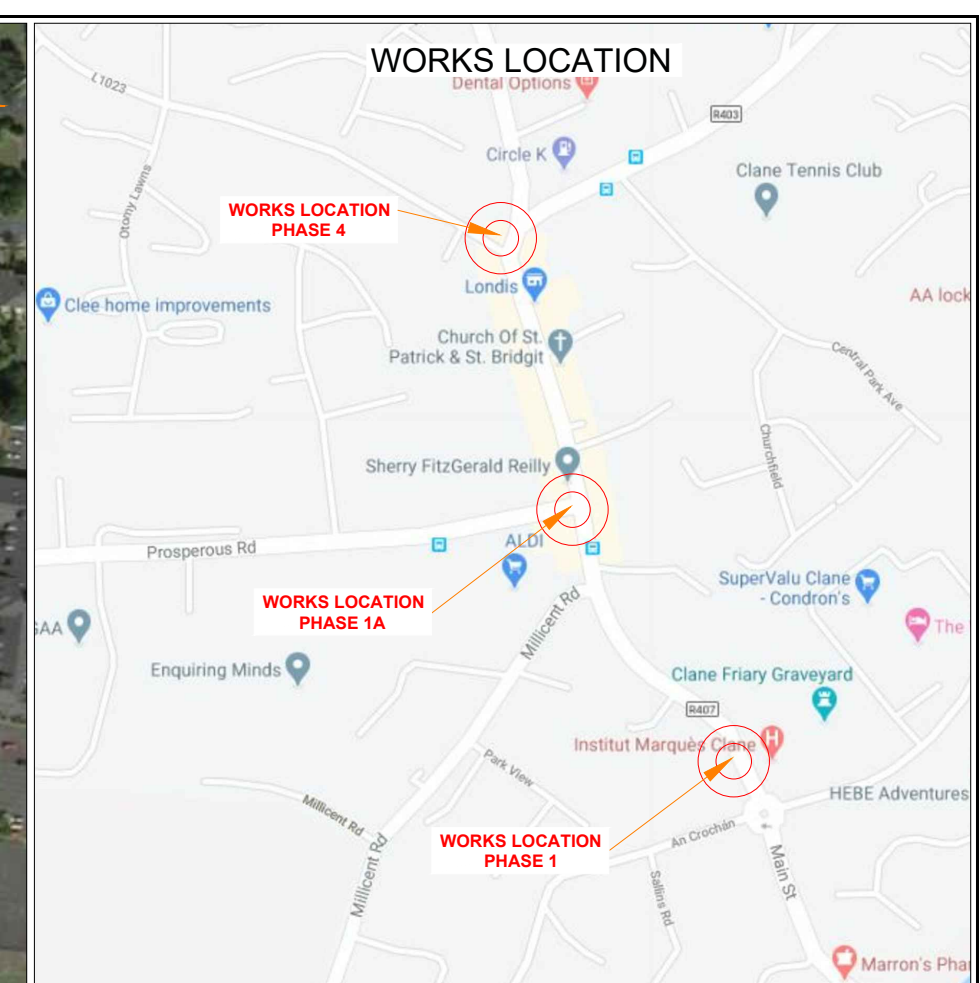
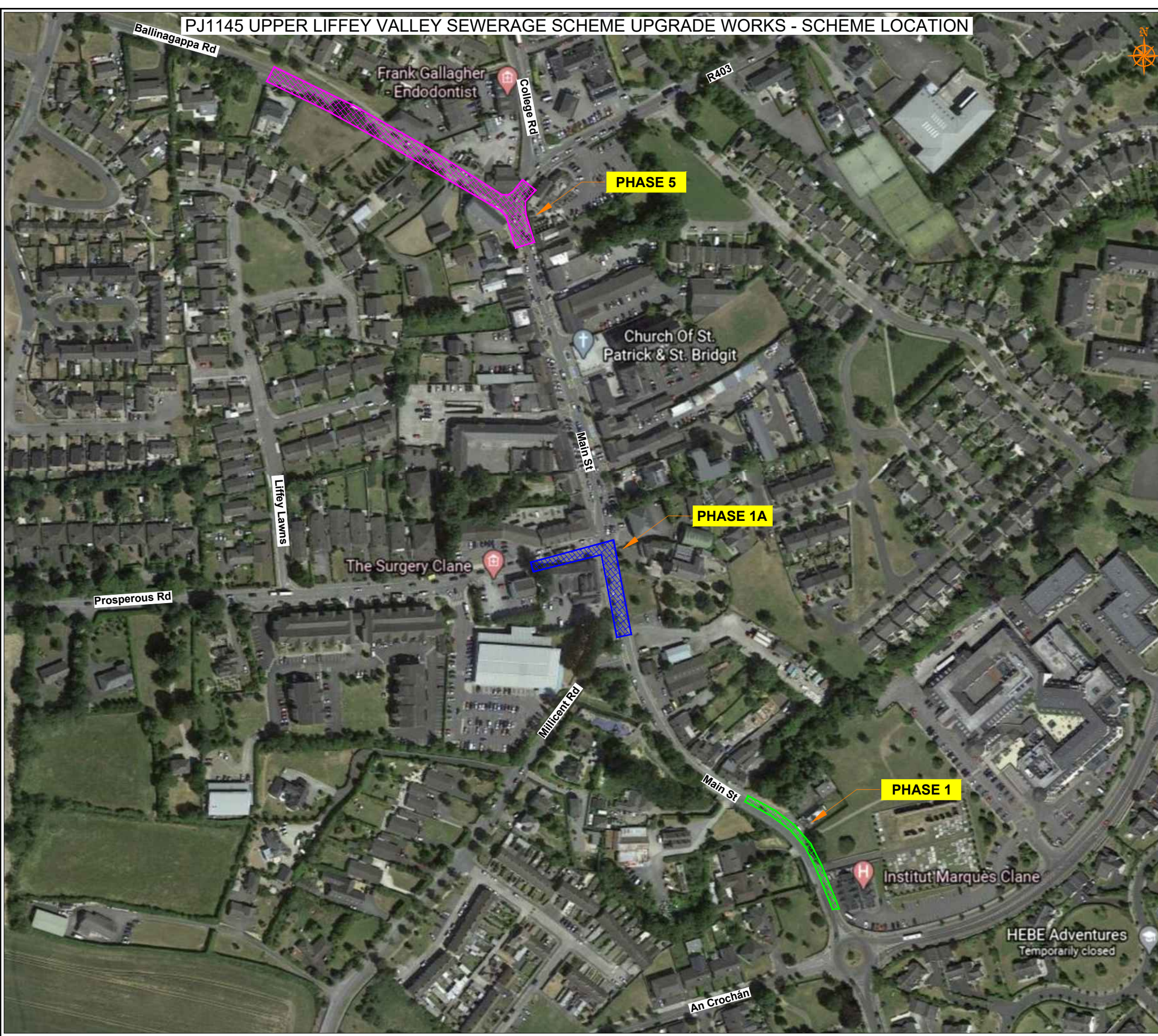


PJ1145 UPPER LIFFEY VALLEY SEWERAGE SCHEME UPGRADE WORKS - SCHEME LOCATION



Copyright Notes: This drawing is the property of Road Control Services Ltd. The design information contained herein is strictly confidential. This document is not to be used, reproduced, disclosed or circulated in whole or in part without prior written consent.

CLIENT

DESIGN PARAMETERS			
Speed Limit	50 km/h	Sign size (diamond)	600mm
Road Classification	1(iii)	Sign size (circular)	600mm
Roadworks type	A	Minimum Cone size	750mm
Number of advance signs	2	Cone spacing at tapers	3m
Sign visibility	50m	Cone spacing longitudinal	3m
Distance between signs	20m	Lateral Safety Zone	0.5m
Taper at lane	1 in 5	Longitudinal Safety Zone	5m
Taper at hard shoulder	N/A	Minimum lane width	3.00m

LEGEND	
	- Phase 5
	- Phase 1A
	- Phase 1

GENERAL NOTES

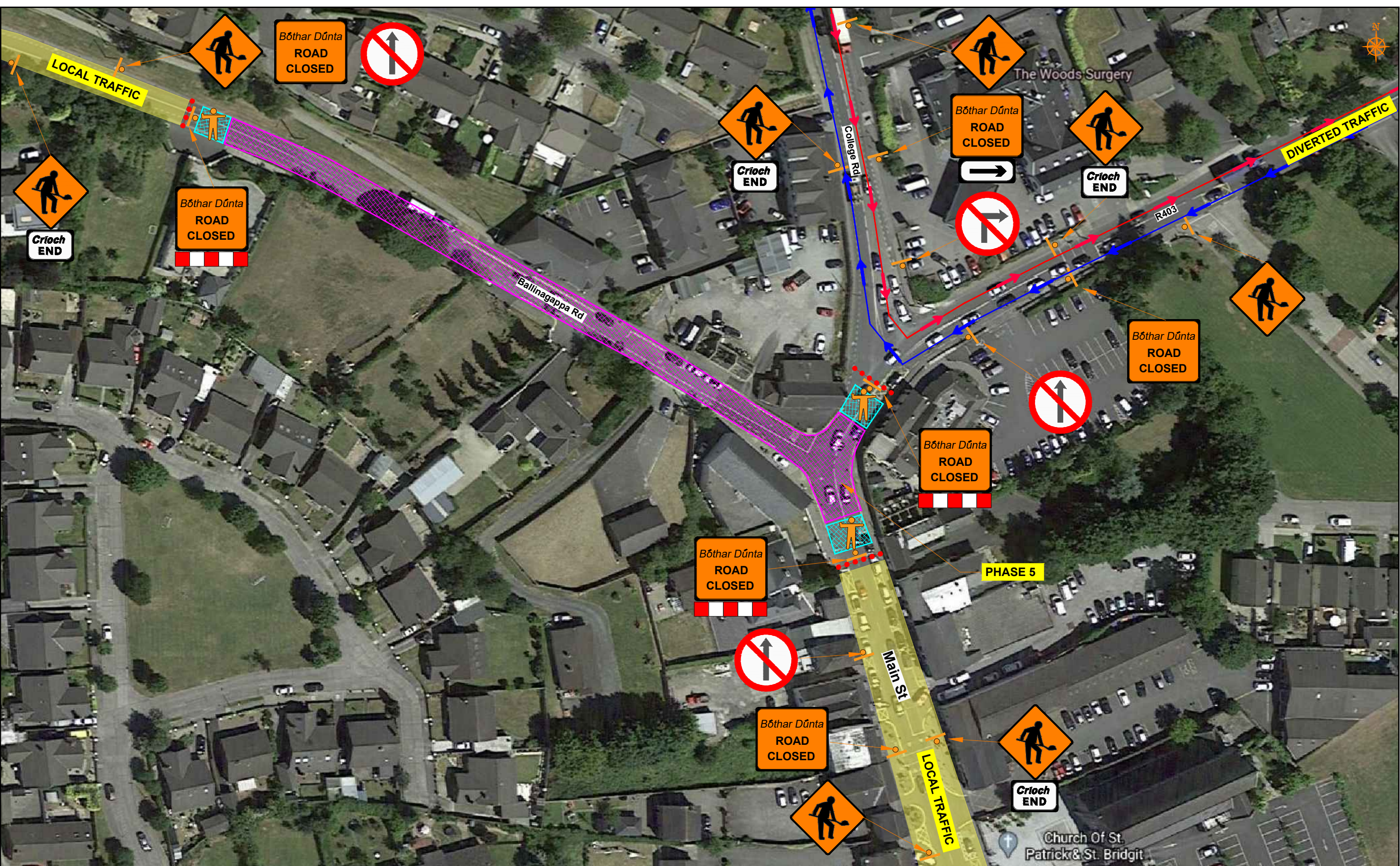
- All information contained in this drawing (including digital data) should be checked and verified prior to any stage of construction.
- All works are to be carried out in accordance with local authority requirements and are to be included in the site-specific safety & health plan.
- Site inspections and maintenance of the traffic management layout is to be agreed with local authority to ensure the safety and integrity of the design.
- Contractor to carry out a site risk assessment prior to the installation of any traffic management plan to ensure that conditions reflect those considered for design post submission.
- Contractor shall be responsible for the provision of ramp access at any change in road surface level where traffic runs on a temporary surface, and for pedestrian/cycle ramps where footpath/cycleways have a level discontinuity as per result of the works.

Rev	Date	Details	Dm	Chk	App	Dm	DS
							CS
							DH
							07-04-2020
							A1 NTS
							A3 NTS
							CONSTRUCTION

Project
J1145 UPPER LIFFEY VALLEY SEWERAGE SCHEME UPGRADE WORKS

Title
TRAFFIC MANAGEMENT PLAN WORKS LOCATION

Drawing No C20001_03_013 Rev 0



Copyright Notes:
This drawing is the property of Road Control Services Ltd. The design information contained herein is strictly confidential. This document is not to be used, reproduced, disclosed or circulated in whole or in part without prior written consent.

CLIENT



DESIGN PARAMETERS

Speed Limit	50 km/h	Sign size (diamond)	600mm
Road Classification	1(iii)	Sign size (circular)	600mm
Roadworks type	A	Minimum Cone size	750mm
Number of advance signs	2	Cone spacing at tapers	3m
Sign visibility	50m	Cone spacing longitudinal	3m
Distance between signs	20m	Lateral Safety Zone	0.5m
Taper at lane	1 in 5	Longitudinal Safety Zone	5m
Taper at hard shoulder	N/A	Minimum lane width	3.00m

LEGEND

- Works Area
- Long. Safety Zone
- Traffic sign
- Traffic cones
- South Diversion
- North Diversion
- TM Marshall

GENERAL NOTES

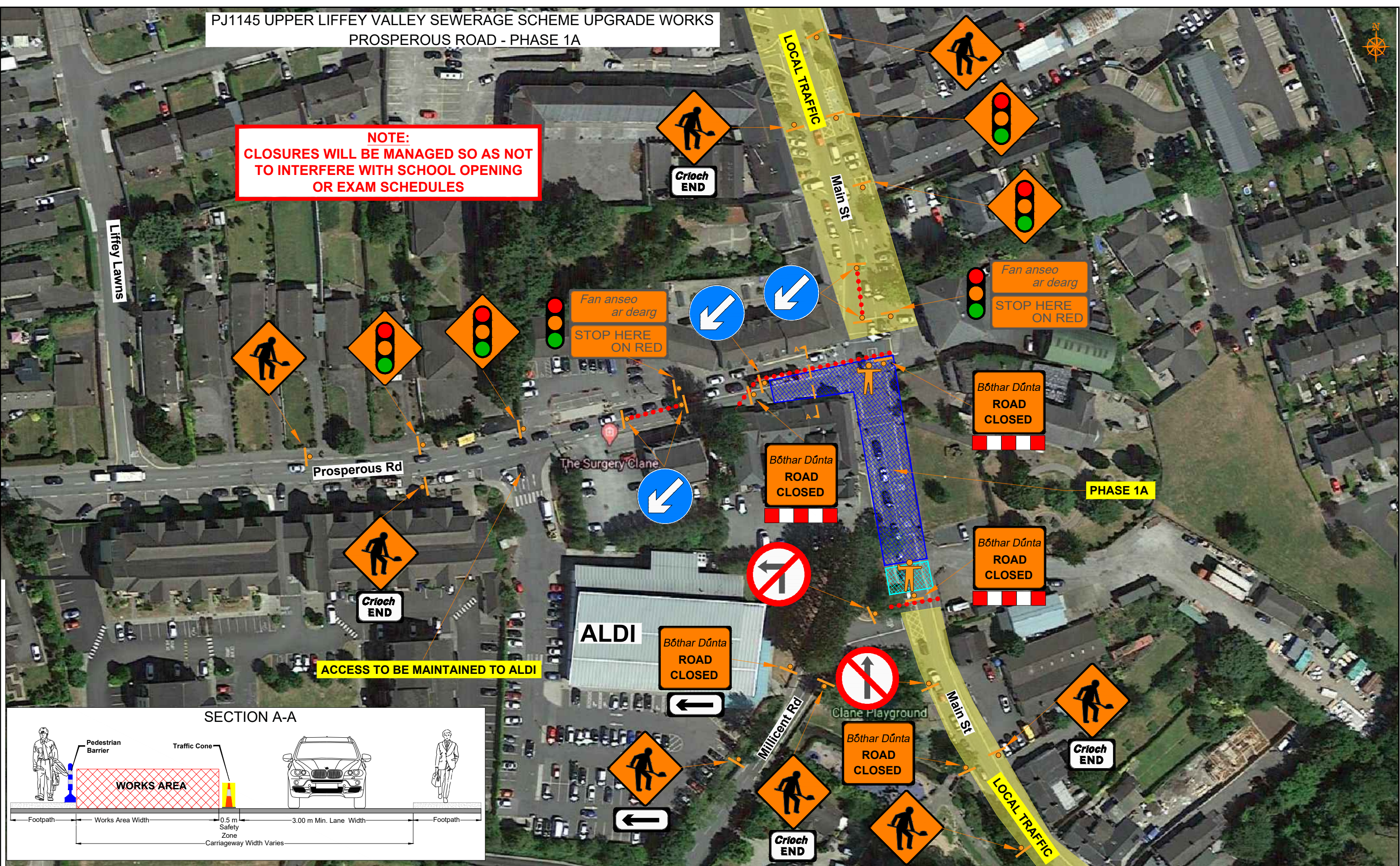
- 1) All information contained in this drawing (including digital data) should be checked and verified prior to any stage of construction.
- 2) All works are to be carried out in accordance with local authority requirements and are to be included in the site-specific safety & health plan.
- 3) Site inspections and maintenance of the traffic management layout is to be agreed with local authority to ensure the safety and integrity of the design.
- 4) Contractor to carry out a site risk assessment prior to the installation of any traffic management plan to ensure that conditions reflect those considered for design post submission.
- 5) Contractor shall be responsible for the provision of ramp access at any change in road surface level where traffic runs on a temporary surface, and for pedestrian/cycle ramps where footpath/cycle-ways have a level discontinuity as per result of the works.

Rev	Date	Details	Dm	Chk	App	Dm	DS
							Project
							J1145 UPPER LIFFEY VALLEY SEWERAGE SCHEME UPGRADE WORKS
							Title
							TRAFFIC MANAGEMENT PLAN BALLINAGAPPA ROAD / MAIN STREET PHASE 5
							Drawing No C20001_03_014
							Rev 0

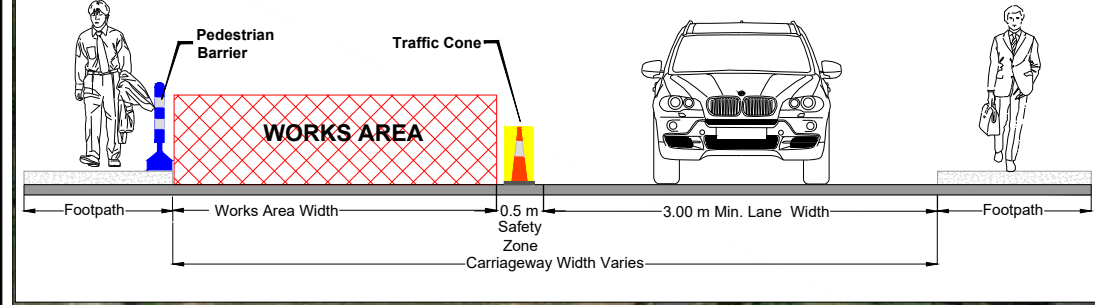
Project	J1145 UPPER LIFFEY VALLEY SEWERAGE SCHEME UPGRADE WORKS
Title	TRAFFIC MANAGEMENT PLAN BALLINAGAPPA ROAD / MAIN STREET PHASE 5
Drawing No	C20001_03_014
Rev	0

PJ1145 UPPER LIFFEY VALLEY SEWERAGE SCHEME UPGRADE WORKS
PROSPEROUS ROAD - PHASE 1A

NOTE:
CLOSURES WILL BE MANAGED SO AS NOT
TO INTERFERE WITH SCHOOL OPENING
OR EXAM SCHEDULES



SECTION A-A



Copyright Notes:
This drawing is the property of Road Control Services Ltd. The design information contained herein is strictly confidential. This document is not to be used, reproduced, disclosed or circulated in whole or in part without prior written consent.



DESIGN PARAMETERS	
Speed Limit	50 km/h
Road Classification	1(iii)
Roadworks type	A
Number of advance signs	2
Sign visibility	50m
Distance between signs	20m
Taper at lane	1 in 5
Taper at hard shoulder	N/A
Sign size (diamond)	600mm
Sign size (circular)	600mm
Minimum Cone size	750mm
Cone spacing at tapers	3m
Cone spacing longitudinal	3m
Lateral Safety Zone	0.5m
Longitudinal Safety Zone	5m
Minimum lane width	3.00m

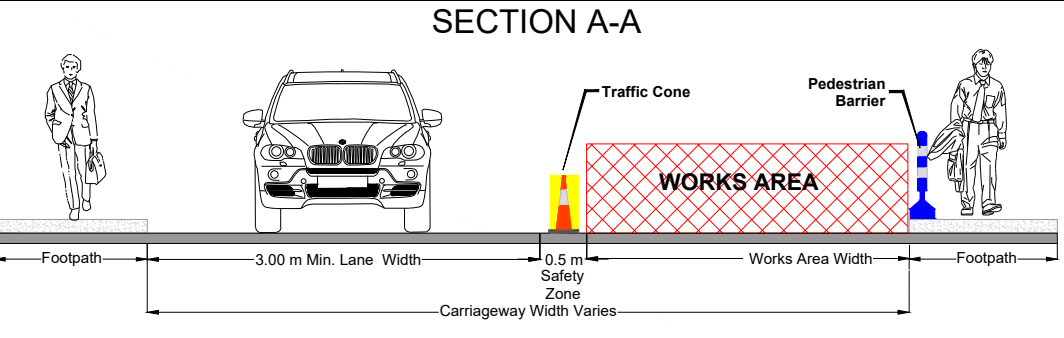
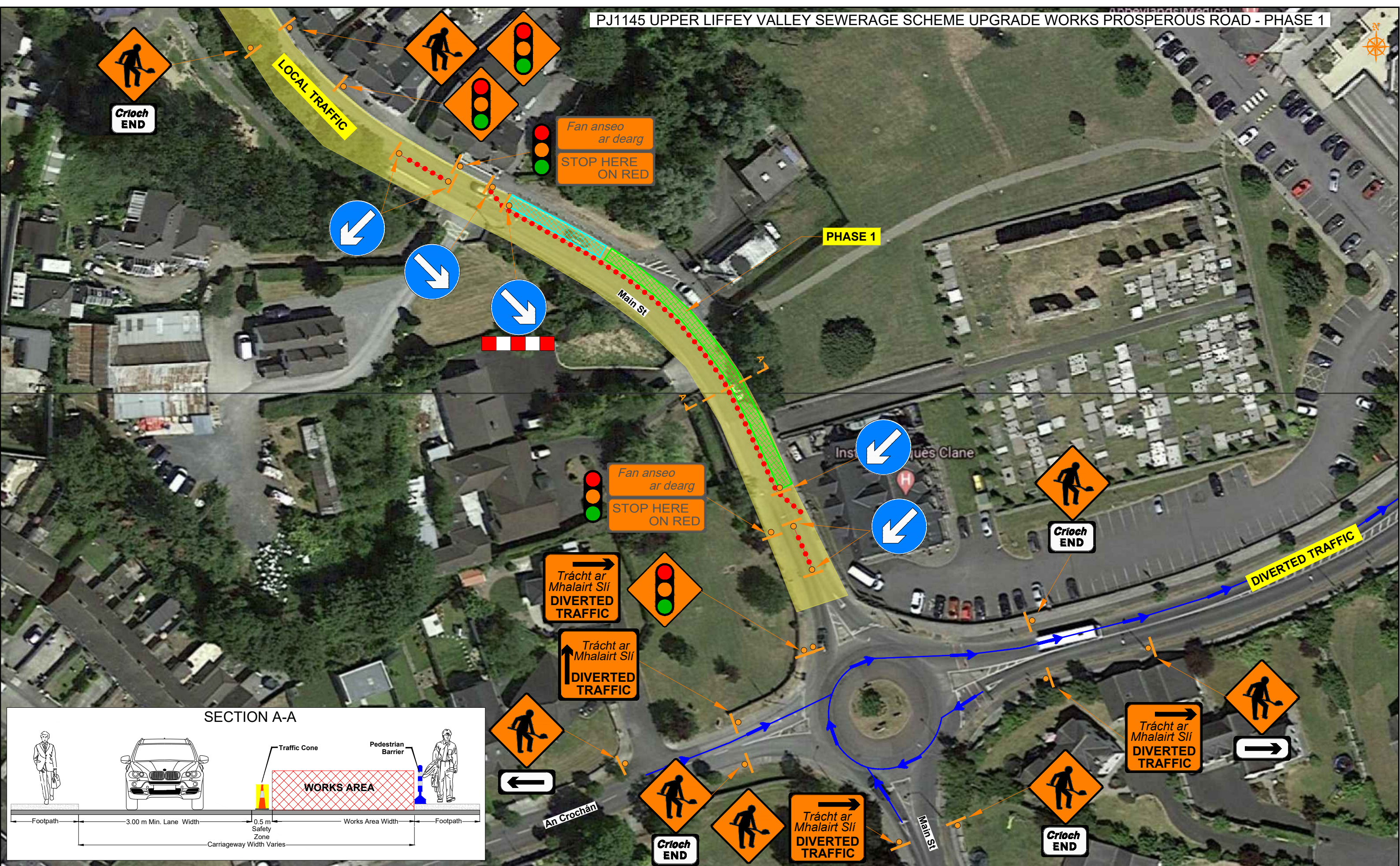
LEGEND	
	- Works Area
	- Long. Safety Zone
	- Traffic sign
	- Traffic cones
	- TM Marshall

GENERAL NOTES

- 1) All information contained in this drawing (including digital data) should be checked and verified prior to any stage of construction.
- 2) All works are to be carried out in accordance with local authority requirements and are to be included in the site-specific safety & health plan.
- 3) Site inspections and maintenance of the traffic management layout is to be agreed with local authority to ensure the safety and integrity of the design.
- 4) Contractor to carry out a site risk assessment prior to the installation of any traffic management plan to ensure that conditions reflect those considered for design post submission.
- 5) Contractor shall be responsible for the provision of ramp access at any change in road surface level where traffic runs on a temporary surface, and for pedestrian/cycle ramps where footpath/cycleways have a level discontinuity as per result of the works.

Rev	Date	Details	Drm	Chk	App	Drm	DS

Project		Title	
J1145 UPPER LIFFEY VALLEY SEWERAGE SCHEME UPGRADE WORKS	CHA	TRAFFIC MANAGEMENT PLAN PROSPEROUS ROAD / MAIN STREET PHASE 1A	CHA
Date	07-04-2020	Scale	A1 NTS A3 NTS
Stage	CONSTRUCTION	Drawing No	C20001_03_010
		Rev	0



ROAD CONTROL

Copyright Notes:
This drawing is the property of Road Control Services Ltd. The design information contained herein is strictly confidential. This document is not to be used, reproduced, disclosed or circulated in whole or in part without prior written consent.

CLIENT

DESIGN PARAMETERS

Speed Limit	50 km/h	Sign size (diamond)	600mm
Road Classification	1(iii)	Sign size (circular)	600mm
Roadworks type	A	Minimum Cone size	750mm
Number of advance signs	2	Cone spacing at tapers	3m
Sign visibility	50m	Cone spacing longitudinal	3m
Distance between signs	20m	Lateral Safety Zone	0.5m
Taper at lane	1 in 5	Longitudinal Safety Zone	5m
Taper at hard shoulder	N/A	Minimum lane width	3.00m

LEGEND

- Works Area
- Long. Safety Zone
- Traffic sign
- Traffic cones
- North Diversion

GENERAL NOTES

- 1) All information contained in this drawing (including digital data) should be checked and verified prior to any stage of construction.
- 2) All works are to be carried out in accordance with local authority requirements and are to be included in the site-specific safety & health plan.
- 3) Site inspections and maintenance of the traffic management layout is to be agreed with local authority to ensure the safety and integrity of the design.
- 4) Contractor to carry out a site risk assessment prior to the installation of any traffic management plan to ensure that conditions reflect those considered for design post submission.
- 5) Contractor shall be responsible for the provision of ramp access at any change in road surface level where traffic runs on a temporary surface, and for pedestrian/cycle ramps where footpath/cycle-ways have a level discontinuity as per result of the works.

Rev	Date	Details	Dm	Chk	App	Dm	DS

Project **J1145 UPPER LIFFEY VALLEY SEWERAGE SCHEME UPGRADE WORKS**

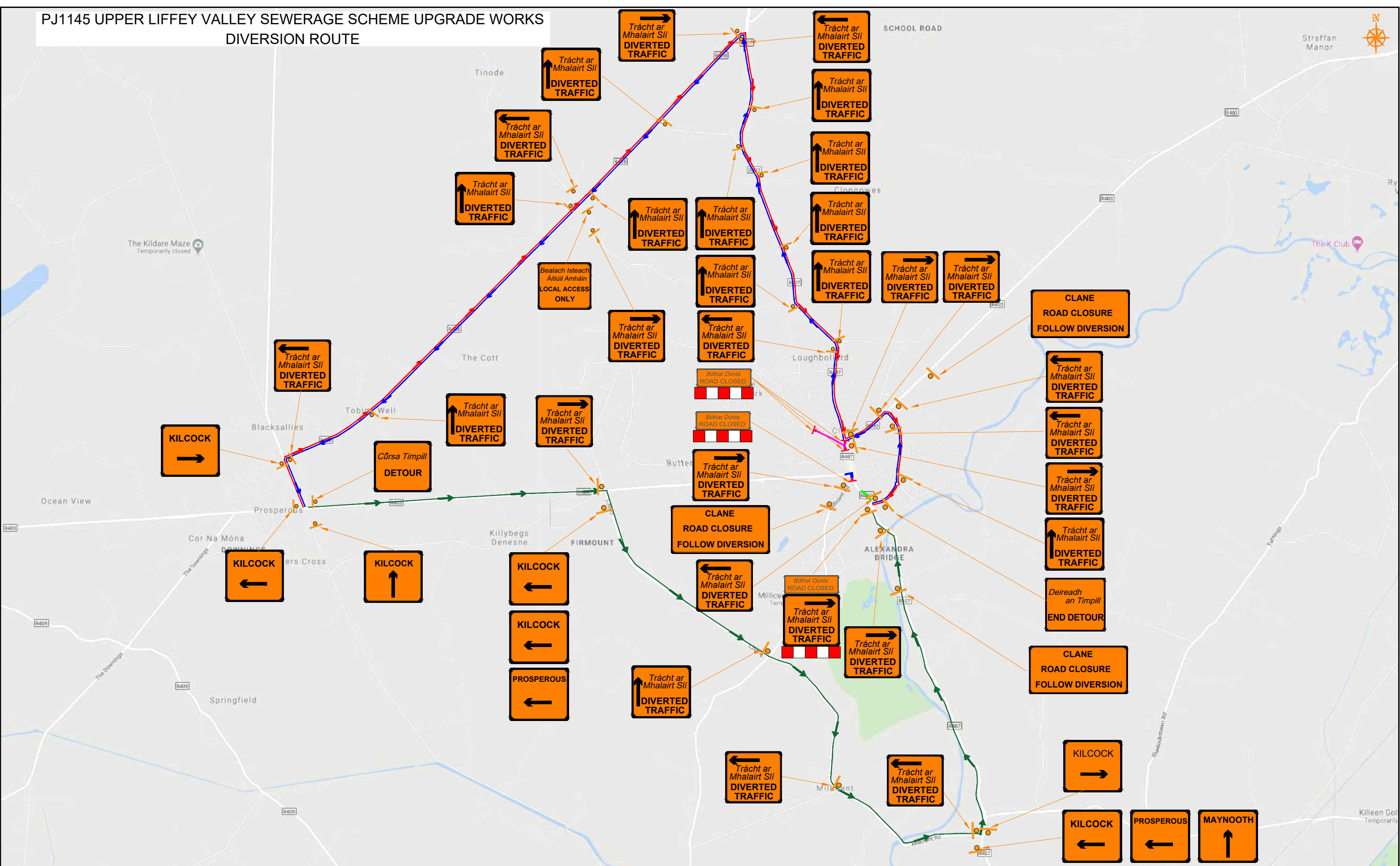
Title **TRAFFIC MANAGEMENT PLAN MAIN STREET PHASE 1**

Scale A1 NTS
A3 NTS

Stage **CONSTRUCTION**

Drawing No C20001_03_011 Rev 0

PJ1145 UPPER LIFFEY VALLEY SEWERAGE SCHEME UPGRADE WORKS
DIVERSION ROUTE



CLIENT

DESIGN PARAMETERS

Speed Limit	50 km/h	Sign size (diamond)	600mm
Road Classification	1(iii)	Sign size (circular)	600mm
Roadworks type	A	Minimum Cone size	750mm
Number of advance signs	2	Cone spacing at tapers	3m
Sign visibility	50m	Cone spacing longitudinal	3m
Distance between signs	20m	Lateral Safety Zone	0.5m
Taper at lane	1 in 5	Longitudinal Safety Zone	5m
Taper at hard shoulder	N/A	Minimum lane width	3.00m

LEGEND

	- Traffic sign
--	----------------

GENERAL NOTES

- 1) All information contained in this drawing (including digital data) should be checked and verified prior to any stage of construction.
- 2) All works are to be carried out in accordance with local authority requirements and are to be included in the site-specific safety & health plan.
- 3) Site inspections and maintenance of the traffic management layout is to be agreed with local authority to ensure the safety and integrity of the design.
- 4) Contractor to carry out a site risk assessment prior to the installation of any traffic management plan to ensure that conditions reflect those considered for design post submission.
- 5) Contractor shall be responsible for the provision of ramp access at any change in road surface level where traffic runs on a temporary surface, and for pedestrian/cycle ramps where footpath/cycle-ways have a level discontinuity as per result of the works.

Rev	Date	Details	Dm	Chk	App	Dm	DS
							CS
							DH
							07-04-2020
							A1 NTS
							A3 NTS
							CONSTRUCTION

Project **J1145 UPPER LIFFEY VALLEY SEWERAGE SCHEME UPGRADE WORKS**

Title **TRAFFIC MANAGEMENT PLAN DIVERSION ROUTE**

Drawing No **C20001_03_015** Rev **0**